

PRESENTATION 2024

NICKEL ORE CAPABILITY

LEADER IN MINING SERVICE CONSULTANCY

SMGC is an international geological and mining consulting company with in-depth knowledge of **Nickel, Gold, Manganese, Copper, Tin, Lead, Zinc, Bauxite, Limestone, Iron Ore, Thermal Coal, Coking Coal and other minerals.**

SMGC works in accordance with the following codes: JORC, KCMI, NI 43-101, and VALMIN by staffing their consultancy with recognized **"Competent and Qualified Persons."**

SMGC excels in unlocking greenfield concessions and enhancing existing mining operations to maximize the value of a client's deposit regardless of commodity type.



Integrity and Honesty

We operate with unwavering honesty and integrity, ensuring trust and transparency in all dealings.

Effective Communication & Team Approach

Clear and open communication coupled with a collaborative team approach ensures alignment and optimal outcomes.



Reliability

Clients can count on us to deliver consistently excellent results, meeting deadlines and surpassing expectations.

Add Value

We continuously strive to enhance projects by identifying opportunities for improvement and maximizing returns for our clients.

Established in 1966, SMGC brings over 57 years of international consultancy experience, with a track record of success in numerous projects globally. Our team comprises highly experienced and competent professionals dedicated to delivering exceptional results.

TIMELINE



OCT 2002
SURPAC SOFTWARE MERGER

On 1st October 2002 Surpac Software International and ECS International concluded a merger of the two businesses. The core businesses of both ECSI and Surpac are the delivery of technical and management solutions to the global mining industry.



MARCH 2006 SMG CONSULTANTS PTY LTD
 STANDALONE CONSULTANCY
 SMG Consultants focused on global business and become a standalone consultancy.

JUNE 2009
 AUSTRALIAN OPERATION
 SOLD TO GHD



JULY 2009 INDEPENDENT JAKARTA
 HEADQUARTERED
 CONSULTING GROUP



OCT 2011 HONG KONG
 BRANCH CONSULTING



1966 ECS MINING CONSULTANTS
 FOUNDED

ECS Mining Consultants was founded as a part of ECS International. The core business of ECS International is the delivery of technical and management solutions to the global mining industry.



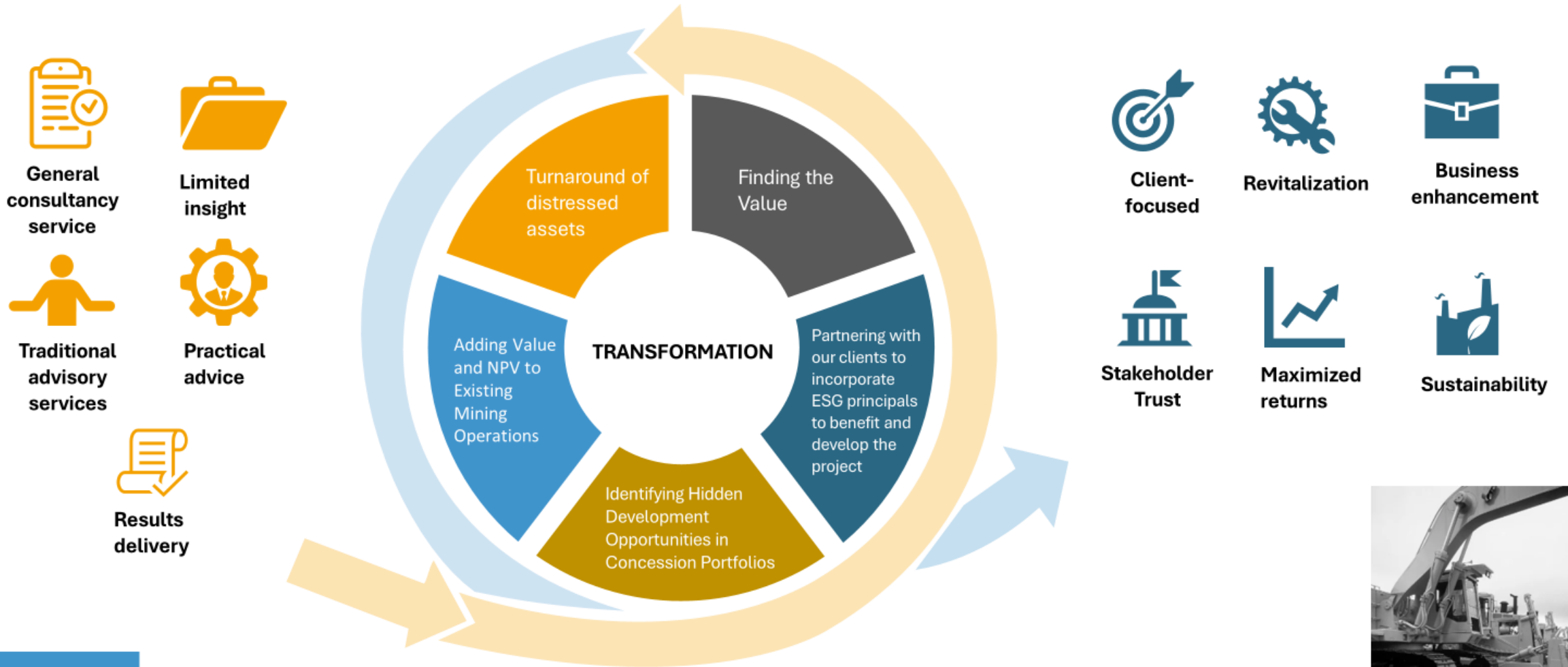
JAN 2004 The consultancy division at The Surpac Minex Group separated to form an independent consulting company. SMG Consultants Pty Ltd joined The Mineserve Group.



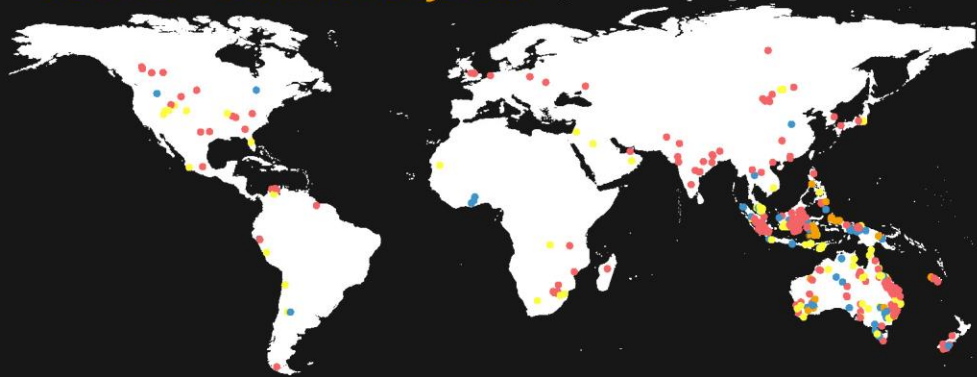
JULY 2010 SINGAPORE BRANCH
 CONSULTING



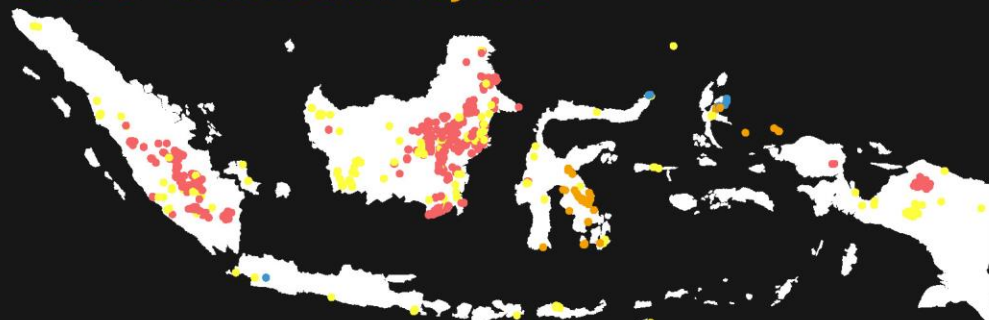
Strategic Transformation: Enhancing Value and Sustainability in Mining Consultancy



SMGC – Global Projects



SMGC – Indonesia Projects



SMGC – Nickel Projects



● Coal ● Gold/Silver ● Nickel ● Other Metals

SMGC PROJECT PORTOFOLIO

+4

decades of global experience working with Lateritic Nickel deposits



1970's

dating back to first Nickel Project in Sulawesi, Indonesia



+7

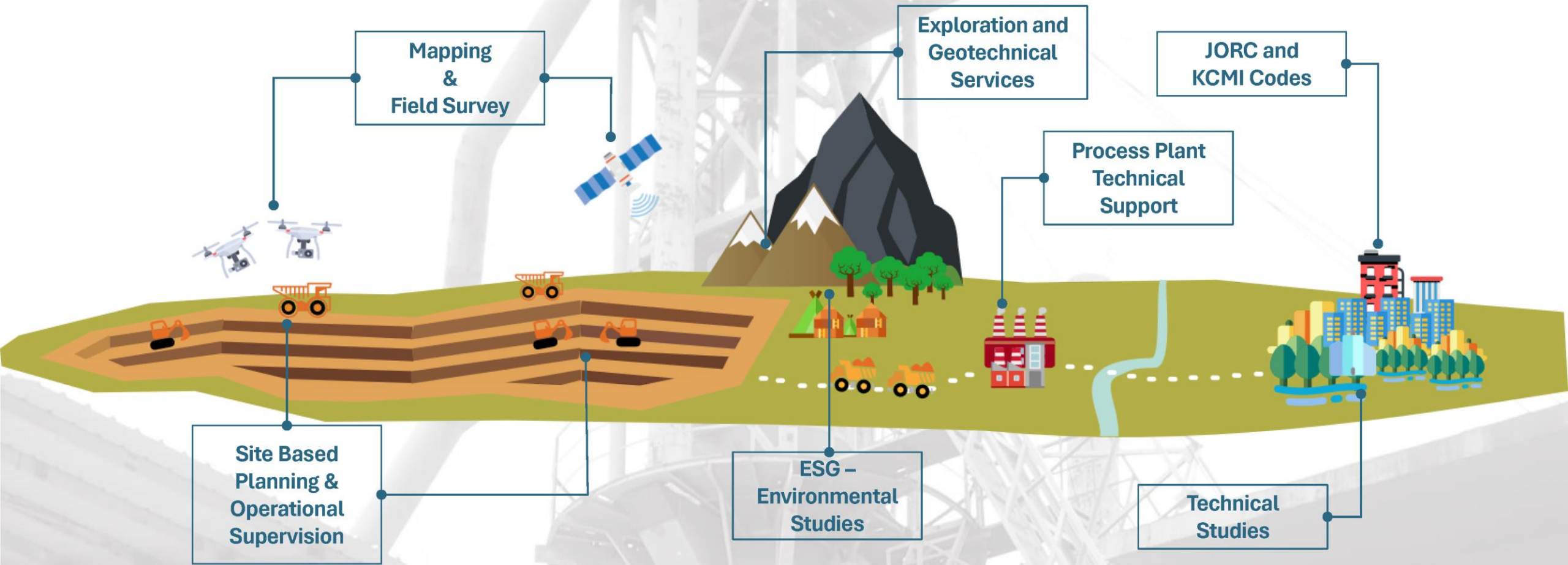
countries across 4 continents working on Nickel Projects throughout the world

+69

nickel Project locations across Sulawesi, Halmahera and Papua

SMGC NICKEL - MAIN SERVICES

“Comprehensive Mining Solutions Across the Spectrum”



SMGC Service Output

General
Review
Study



Exploration
Data
Acquisition



Database
Management



Data
Analysis



Geological
Modelling



Mine
Planning



Technical
Report

Desktop Study Reviews.
Geological Potential Reviews.
Geographical Information System (GIS) Studies.
Due Diligence.
Environmental and Geotechnical Studies.
Standard Operating Procedure for QA/QC Review.
Technical Report Reviews.

Geophysical survey plans & targeting.
Soil sampling, trenching & geological mapping.
Drilling & logging Reviews

Cloud-based real-time databases.
Database audit procedures.

Statistical and Geostatistical analyses.
Data Visualization.
Exploratory data analysis.
Machine learning data clustering.
Statistical and geostatistical analysis.

Exploration sampling and QA/QC review.
Explicit and implicit geological, structure, and mineralization models.
Conditional Simulation.
Resource estimation and classification.
Grade control and production reconciliations.

Mine optimizations and mine designs.
Mine scheduling.
Geotechnical characterization.
Equipment selection.
Engineering studies.
Risk analysis and management of issues.
Operational review and assistance.
Financial evaluations.
Mine planning support.

Due Diligence
KCMi Code
JORC Code
NI 43 - 101
VALMIN Reporting
Feasibility Studies
Government compliance reports.

Advanced Database Management

Real-time core logging.
Secure core photo management.

Dynamic Cut-off Strategy

Enhanced blending for quality and efficiency.
Promoting sustainability through reduced waste and environmental impact.

Efficient Grade Control

Digital assay data leverage for precision grading.
Efficient grade control for accurate assessments.

Exploratory Data Analysis with Machine Learning

Advanced machine learning techniques.
Extracting valuable insights and patterns from complex datasets.

Complex Geological Modeling

Advanced geological modeling techniques.
Capturing geological complexity beyond convention.

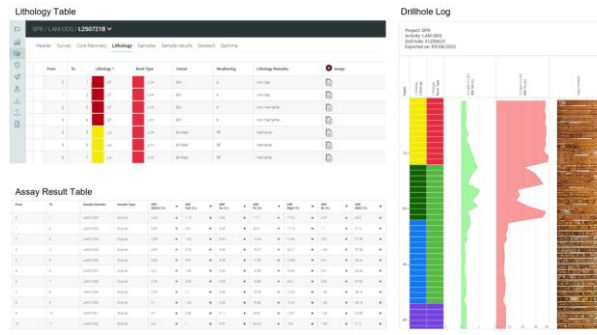


**EMPHASIZING
EXPERTISE**

ADVANCED DATABASE MANAGEMENT

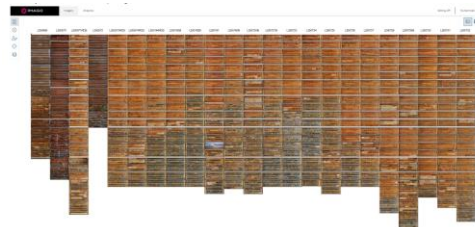
Implementing **real-time logging** of core data directly into a **cloud-based** database.

We execute the real-time logging of core data by directly integrating it into a cloud-based database. This streamlined approach ensures instantaneous data accessibility and facilitates efficient management and analysis processes.



Expertise in managing core photos through a **secure** and **advanced** database software

Demonstrating proficiency, we adeptly manage core photos using secure and advanced database software. This expertise ensures the organized storage, retrieval, and analysis of core imagery, enhancing overall data management capabilities.



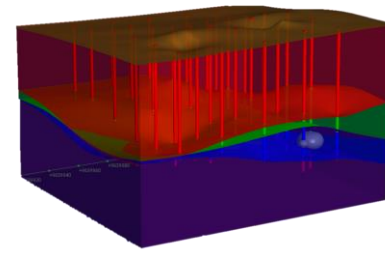
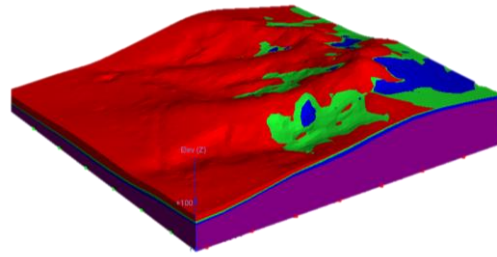
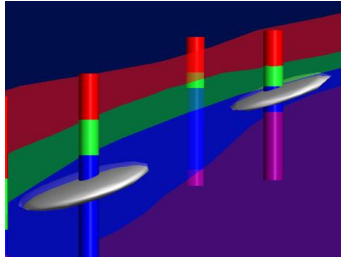
COMPLEX GEOLOGICAL MODELLING



micromine
origin

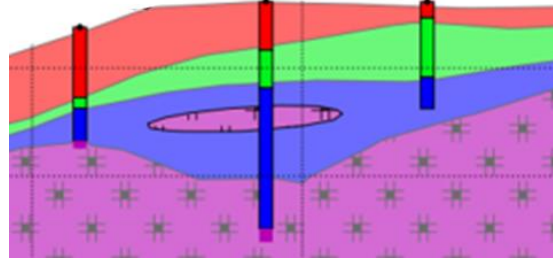
Building complex geological models using state-of-the-art **implicit** and **explicit** techniques

This advanced approach ensures a comprehensive representation of geological features, facilitating accurate analyses and informed decision-making in various applications.



Going **beyond conventional** approaches to capture the **complexity** of geological structures

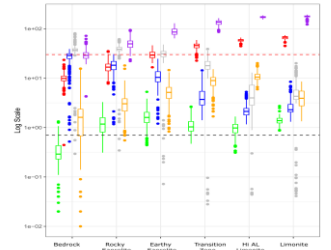
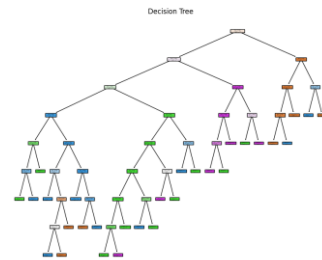
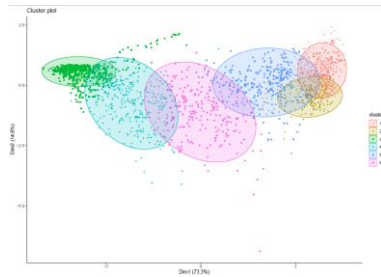
We delve into unconventional approaches to capture the intricacy of geological structures. This innovative strategy enhances our understanding and modeling of geological complexities for more accurate analyses.



DATA ANALYSIS USING MACHINE LEARNING

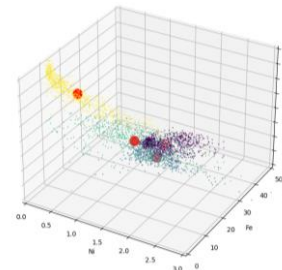
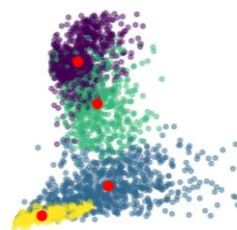
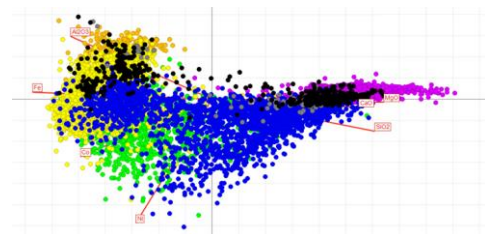
Utilizing advanced **machine learning** techniques for exploratory data analysis

We employ exploratory data analysis to enhance mineral resources modeling, ensuring a comprehensive understanding of geological data through cutting-edge computational techniques and algorithms.



Extracting valuable **insights** and **patterns** from **complex** datasets

We extract valuable insights and identify patterns within intricate datasets. This process involves utilizing advanced computational techniques to reveal meaningful information and drive informed decision-making.



```
);  
var evts = 'contextmenu dblclick drag  
var logHuman = function() {  
if (window.wflogHumanRan) { return  
var wfscr = document.createElement  
wfscr.type = 'text/javascript';  
wfscr.async = true;  
wfscr.src = url + '&r=' + Math.r  
(document.getElementsByTagName  
for (var i = 0; i < evts.length  
removeEvent(evts[i], logHuman  
i = 0; i < evts.length  
[i], logHuman)
```

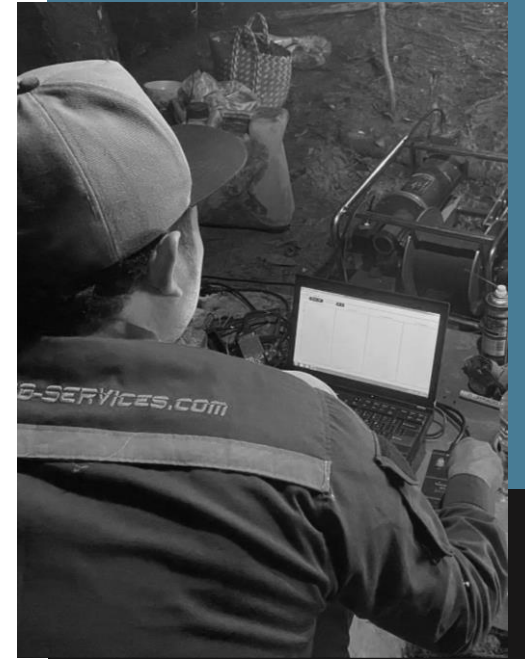
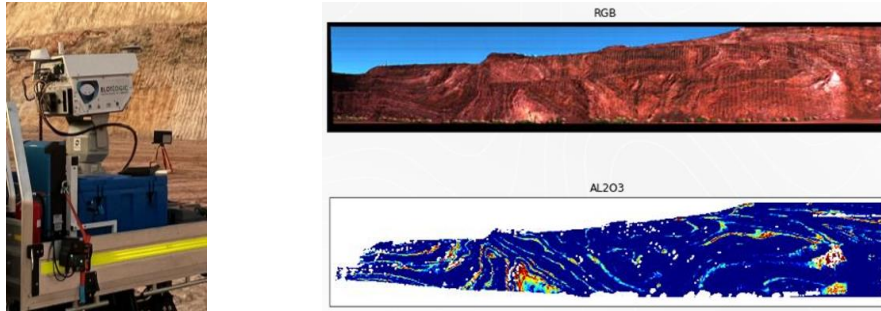


EFFICIENT GRADE CONTROL



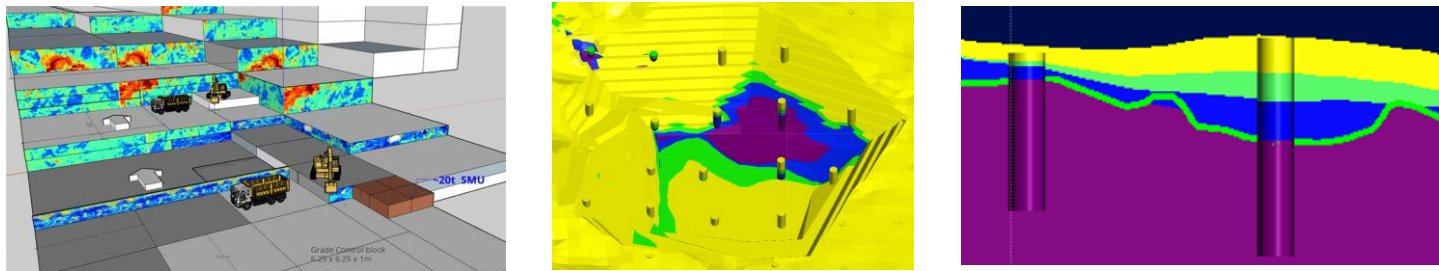
Leveraging **digital assay** data to ensure precision in grade control processes

By leveraging advanced computational techniques, we enhance the accuracy and efficiency of evaluating and categorizing materials, ensuring reliable results.



Implementing **simulation** for efficient and accurate **grade control** assessments

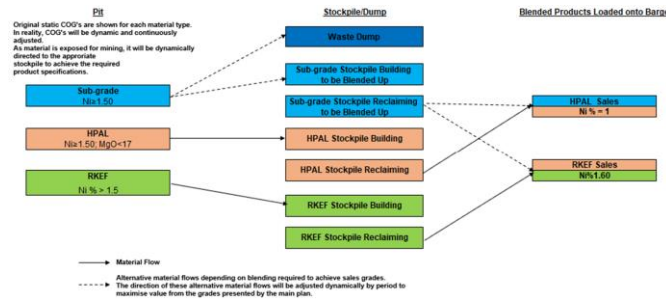
This efficient approach ensures accurate evaluations of material quality, enhancing overall reliability and effectiveness in the operation.



DYNAMIC CUT-OFF STRATEGY

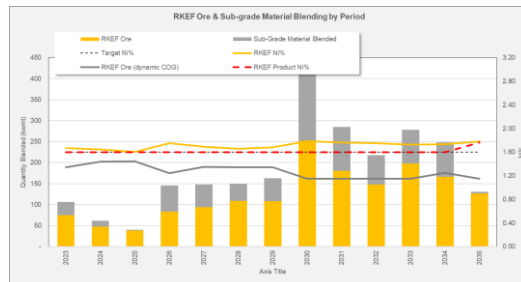
Enhances **blending** for maximum product quality and yield **efficiency**.

A dynamic cut-off strategy adapts to ore variations, enabling optimal mixing of high and low-grade materials, ensuring top-quality products and efficient yields.

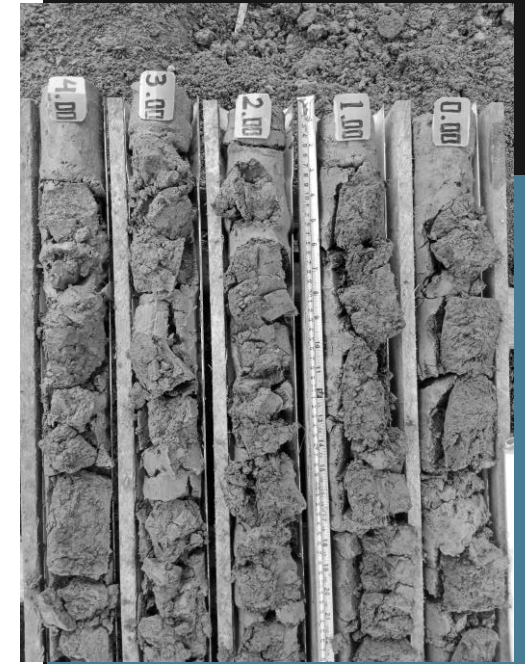


Promotes **sustainability** by minimizing waste mining and environmental impact.

Considering market conditions and production costs, this strategy curtails waste extraction, reducing environmental repercussions and fostering long-term operational sustainability.



GEOVIA Surpac 2020 x64



RECENT NICKEL ORE PROJECTS



MEET OUR TEAM



Keith Whitchurch,

B.Eng. (Mining-Hons), M.EngSc, FAusIMM (CP), CP (Min), RPEQ, PERHAPI, CPI, IPU., ASEAN Eng., APEC Eng.
President Director
Principal Mining Engineer (JORC/KCMI)



Joyanta Chakraborty,

B.Eng. (Mining), MAusIMM, CPI.
Principal Mining Engineer (JORC/KCMI)



Chris Chapman,

Mechanical Engineer
Senior Consultant



Nick Stamedes,

B. Eng. (Mining-Hon.). FAusIMM.
Project Manager



Tri Ratna Arum,

B.Eng. (Mining), MAusIMM, CPI.
Senior Mining Engineer



Debdutta Ganguly,

B.Eng. (Mining), M. Tech (Open Cut
Mining), MAusIMM, CPI.
Senior Mining Engineer



Andrew Keith,

B.Eng. (Mining-Hons), M.EngSc,
M.Phil.
Principal Mining Engineer (JORC)

MEET OUR TEAM



Abdullah Dahlan,
B.Eng. (Geology), MAusIMM, CPI.
Principal Geologist (JORC/KCMI)



Wahyudi Adhiutomo,
B.Eng. (Geology), MAusIMM, CPI.
Principal Geologist (JORC/KCMI)



Muhammad Luthfi,
B.Eng. (Mining Exploration)
Geologist (Nickel)



Fidian Riadi Atmaja,
B.Eng. (Civil Engineering).
Civil Engineer, Estimator



Martina Setowati,
B.Eng. (Mining).
Senior Mining Engineer



Dirga Daniel,
B. Geographic and Environmental Science.
Geographic Information System (GIS) Specialist



Muhammad Burhanudin,
B.Eng. (Geological Engineering)
Geologist
(Base Metal, Nickel, Gold, Bauxite)



Silvia Dwi Indrianti,
B.Eng. (Geodetic Engineering)
Cartographer and Illustrator



Mark Steemson,
B.Eng. (Chemical-Hons), MBA
(Technology Management), Phd.
Doctor of Philosophy in Chemical
Engineering
Mineral Processing Principal Engineer

CONTACT

ADDRESS

AGRO PLAZA – 16TH FLOOR
JL. H.R. RASUNA SAID KAV. X/2 NO. 1
KUNINGAN TIMUR, SETIABUDI
JAKARTA SELATAN – 12950
INDONESIA

Phone : +62 – 21 – 5793 5968 (Hunting)
Fax : +62 21 – 5793 5967
Email : inquiries@smgc.co.id
Website : www.smgc.co.id

**“We Place Total Value In Our Clients and Employees,
and Strive Towards Our Goal of Technical Excellence.”**